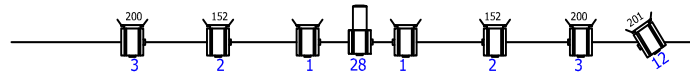
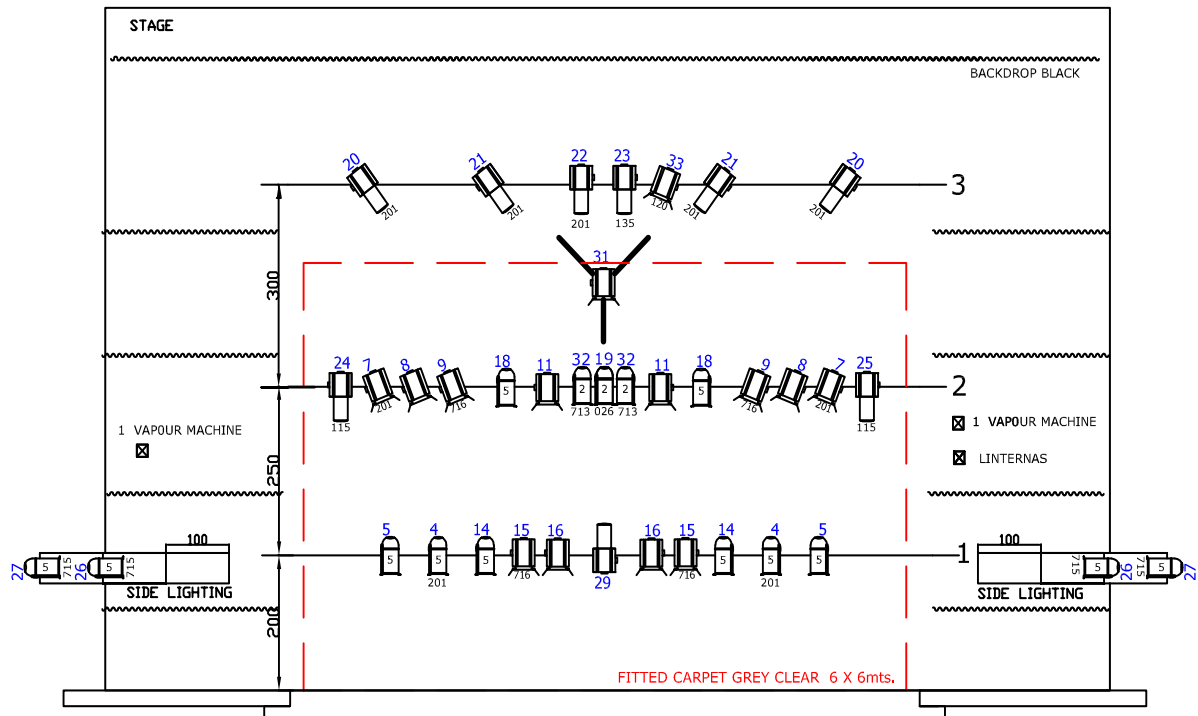


"CLINC"

CIA. PEP BOU



LIGHTING

12 x PAR 64 lamp cp-62	10 X PROFILE 1Kw 25°-50°
3 X PAR 64 lamp cp-61	3 POWER LINES DIRECTS 220V.
21 PC 1Kw with barn doors	

FITTED CARPET GREY LIGHT 6 X 6 mts.
THE THEATER WILL PROVIDE A CARPET

CONTACT:
MAIL OFFICE: clinc-show@mail.ru
TECHNICIAN: Rogozhnikov Pavel
tel. +7(982)627-42-47